



ControlSpace™ ESP-88 DSP expansion card

Installation should only be performed by trained service personnel.

1. Turn off and unplug the ESP-88 and detach the top cover by removing the 8 screws.
2. Remove the main DSP card from the ESP-88 by unscrewing the two screws on the bracket (save these screws).
3. Attach the hex standoff to the top side of the DSP expansion card (side with chips). Use the enclosed screws and lockwashers on rear side to attach the standoffs. See *Figure 1*.
4. Connect the expansion DSP card to the main card by mating their connectors. Secure with the enclosed screws and lockwashers through the back side of the DSP card. See *Figure 2*.

Figure 1

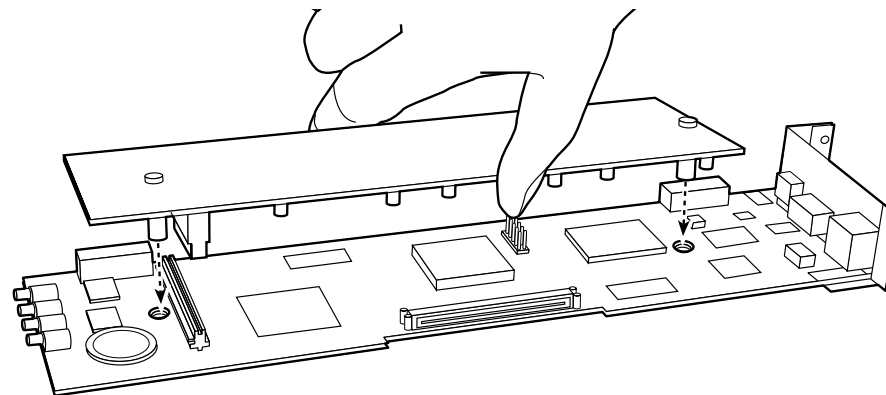


Figure 2

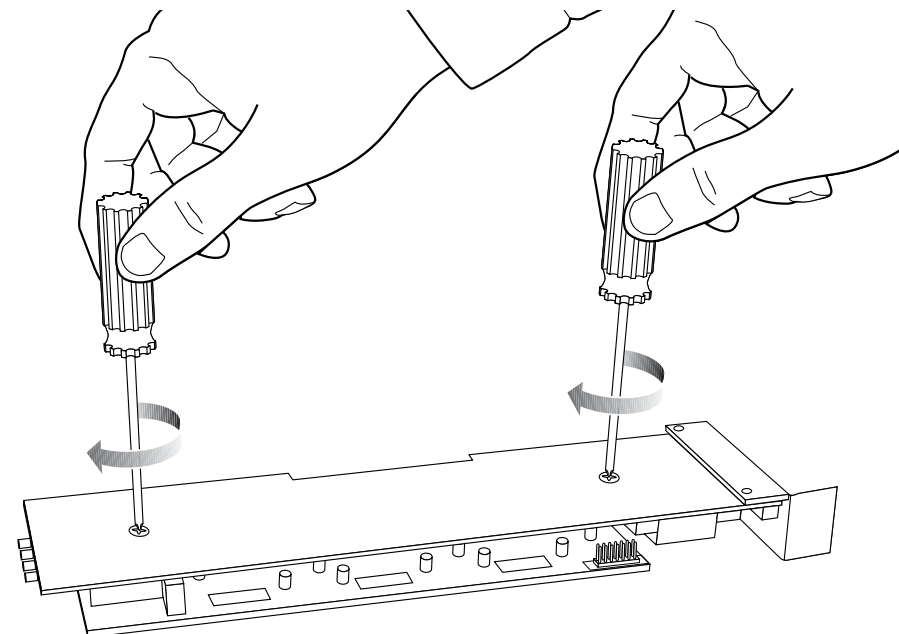
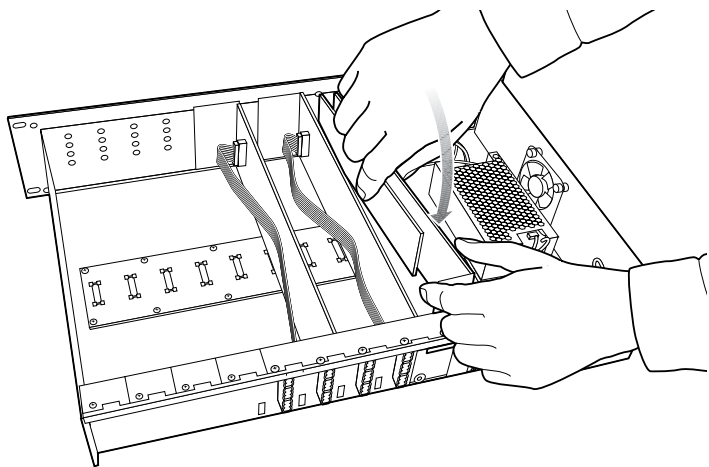


Figure 3



5. Position the cards in the chassis. Be sure to align the card's LEDs with the holes on the wall of the chassis, and make sure the connector on the side of the card is aligned with the connector on the bottom of the chassis. Use the black card guide on the bottom of the case to direct the card. See *Figure 3*.
6. When the connector on the card is aligned above the connector on the motherboard, press gently to mate the connectors.
7. Screw the DSP card into place. See *Figure 4*.
8. Reattach the top cover and fasten the 8 screws. Plug in the power supply and turn on the ESP-88.
9. Use the ControlSpace™ designer software to verify the card was inserted correctly:
 - a) Press scan and confirm that the software detects the card.
 - b) If the card was installed correctly, right-clicking the ESP-88 and displaying its properties will show that the DPS Type is **DSPx4**. See *Figure 5*.
10. If an error message appears, or the software does not properly detect the DSP expansion card, repeat the installation instructions. Be sure that the card is completely pushed into the motherboard connector, and that the card is properly aligned in the chassis.

For installation instructions in other languages, please visit pro.bose.com.

Figure 4

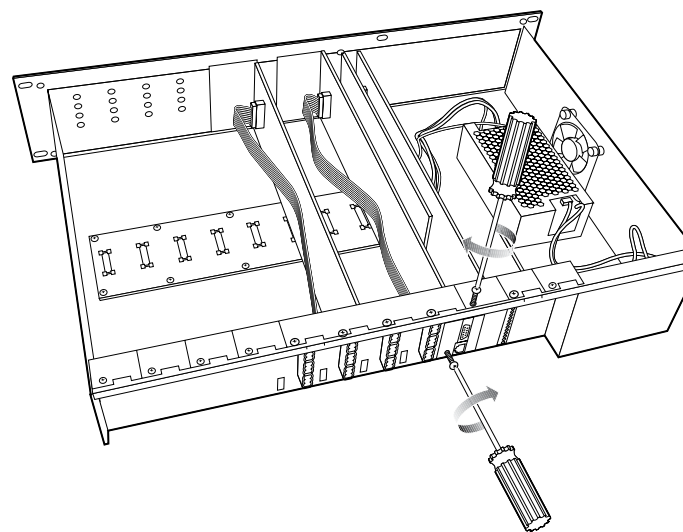
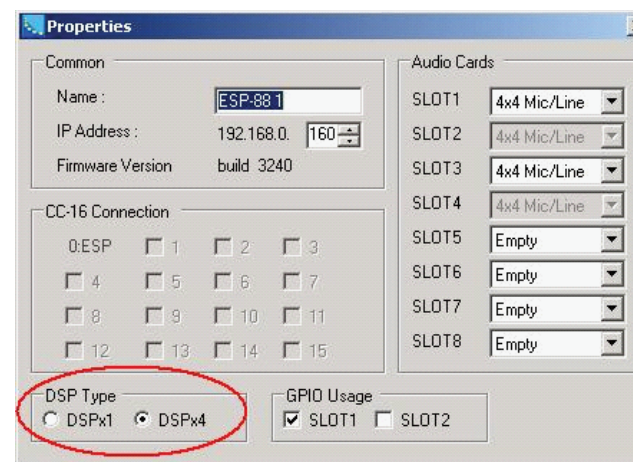


Figure 5



BOSE
Better sound through research®

©2006 Bose Corporation, The Mountain Framingham,
MA 01701-9168 USA
AM299785 Rev.00
pro.bose.com